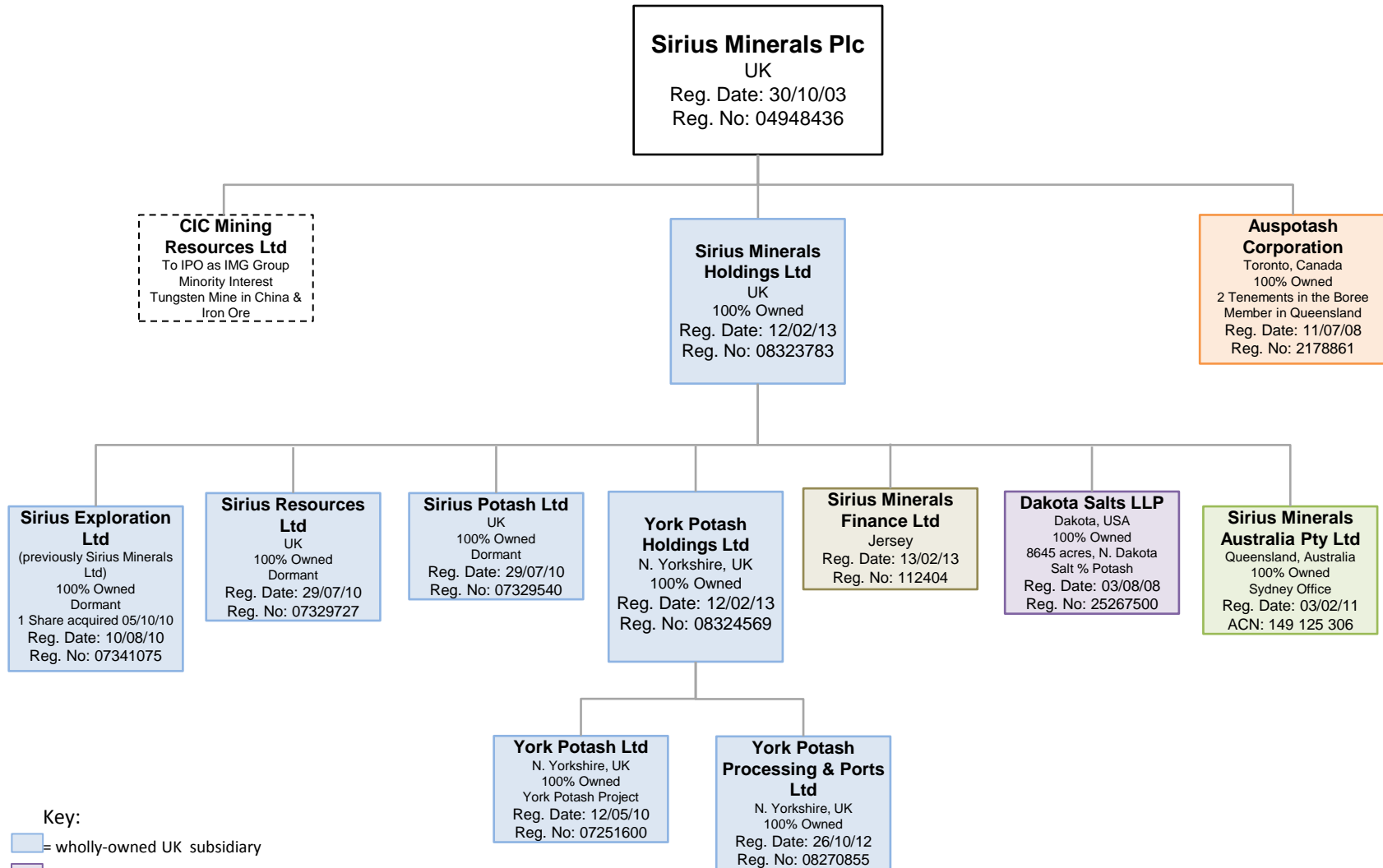


APPENDIX 1

COMPANY STRUCTURE DIAGRAM

SIRIUS MINERALS GROUP CORPORATE STRUCTURE



Key:

- = wholly-owned UK subsidiary
- = wholly-owned US limited liability company
- = minority interest in a Canadian company (*potentially divesting*)
- = wholly-owned Canadian subsidiary
- = wholly-owned Australian subsidiary
- = new wholly-owned Jersey subsidiary